



# Prefixes re-, sub-, inter-

Prefixes with re, sub and inter

## Introductory Activity: What is a Prefix?

Explain what the term prefix means. Start with the prefix re-. Explain how the prefix changes the meaning of words. Question: Can you spot the words beginning with the prefix sub- in the sentences? Do you know what the words mean? Repeat for sub- and inter-.

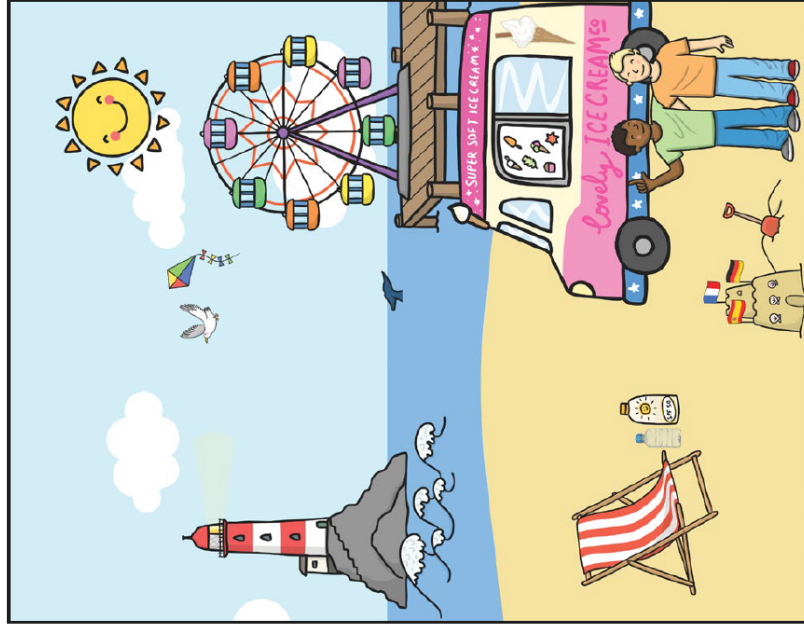
## Independent Focused Activity: Prefixes re-, sub-, inter-

Children complete the differentiated Prefixes re-, sub-, inter- Activity Sheet.

I can add the prefixes re-, sub-, inter- to words to create new words.

1. Fill in the correct prefix to match the root word.

- a) The bottle from the suntan cream is plastic and can be \_\_\_\_\_cycled.
- b) The sandcastle has \_\_\_\_\_national flags on it.
- c) Jack and James will \_\_\_\_\_turn to the big wheel later.
- d) The children drink cold drinks to \_\_\_\_\_hydrate themselves.
- e) It was a very hot \_\_\_\_\_tropical day.
- f) The Whale's head is \_\_\_\_\_merged beneath the water.
- g) The children want to \_\_\_\_\_visit the ice-cream van.
- h) The seagulls keep \_\_\_\_\_appearing from behind the rocks.



### Consolidation Activity

Ask the children to share and discuss what they have learnt about prefixes. Play the game **Prefix Pairs**. Children need to match the prefix to a root word to create a new word, these must make a real word to make a pair.

# Prefix Pairs

I can add the prefixes re-, sub- and inter- to words to create new words.



- Cut around each card fold it in half and stick it together. Place all the cards face down.
- Turn over two cards.
- You get to keep the pair if you turn over a matching prefix (inter-) + root (-act) = new word (interact).
- Have another turn if you get a pair.
- The winner is the person with the most cards when all the cards have been paired up.

inter-

inter-

sub-

re-

-appear

**-active**

**re-**

**-preter**

**-heading**

**inter-**

**-fresh**

**-net**

**re-**