

PDHPE

## ***Safety***

Show that you could demonstrate appropriate behaviour in emergency situations.

- Call 000
- Emergency services.

# Emergency Services



Is this an emergency?



Is this an emergency?



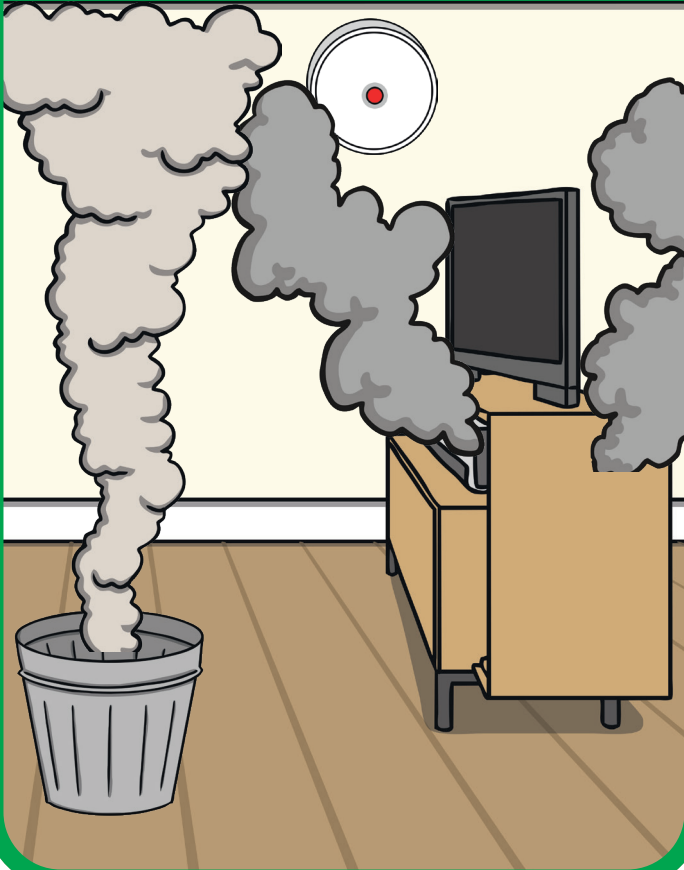
Is this an emergency?



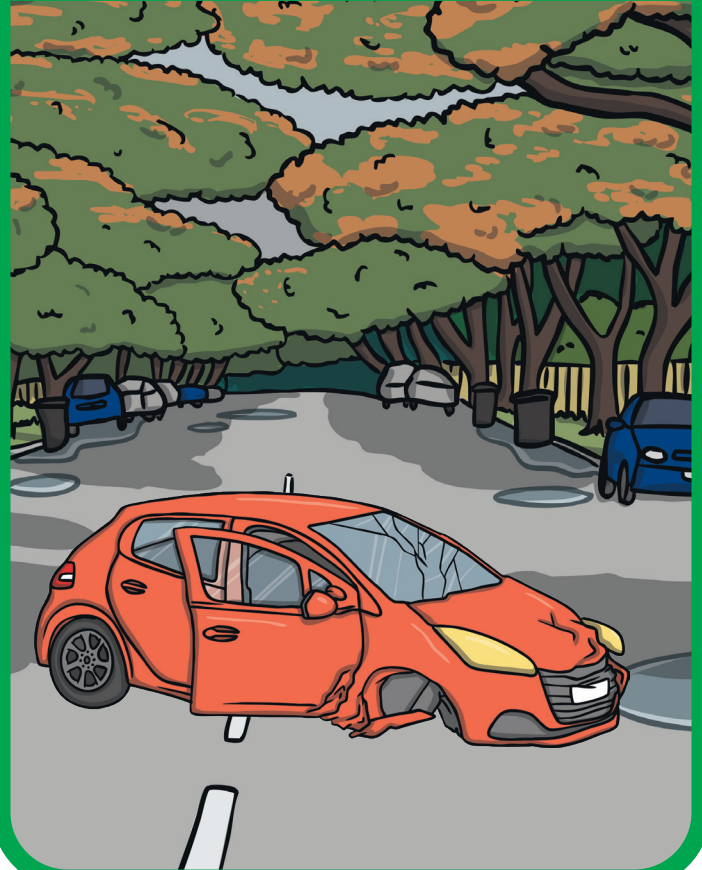
Is this an emergency?



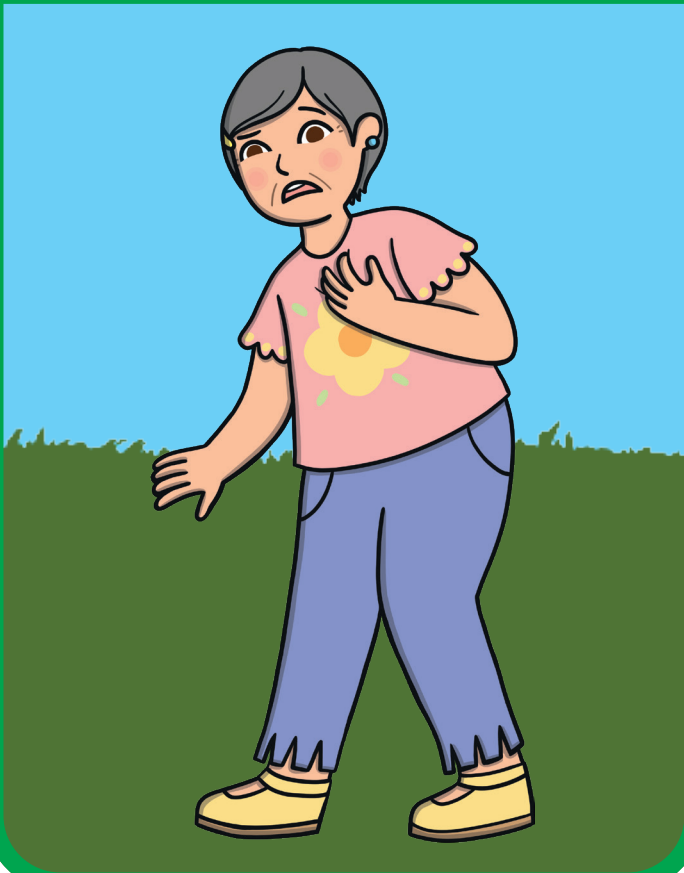
Is this an emergency?



Is this an emergency?



Is this an emergency?



Is this an emergency?





Is this an emergency?



twinkl.com

Is this an emergency?



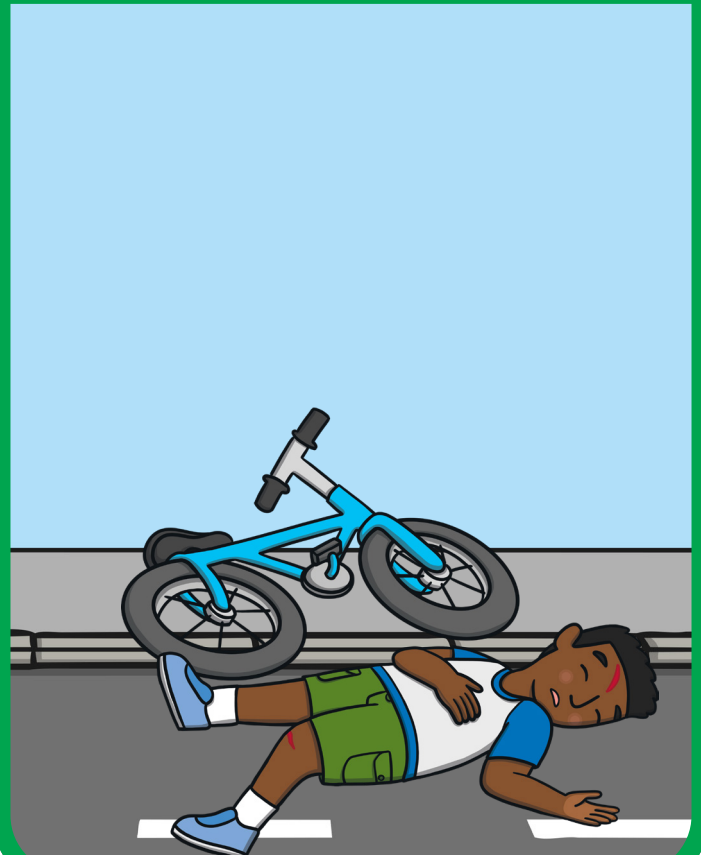
twinkl.com

Is this an emergency?



twinkl.com

Is this an emergency?

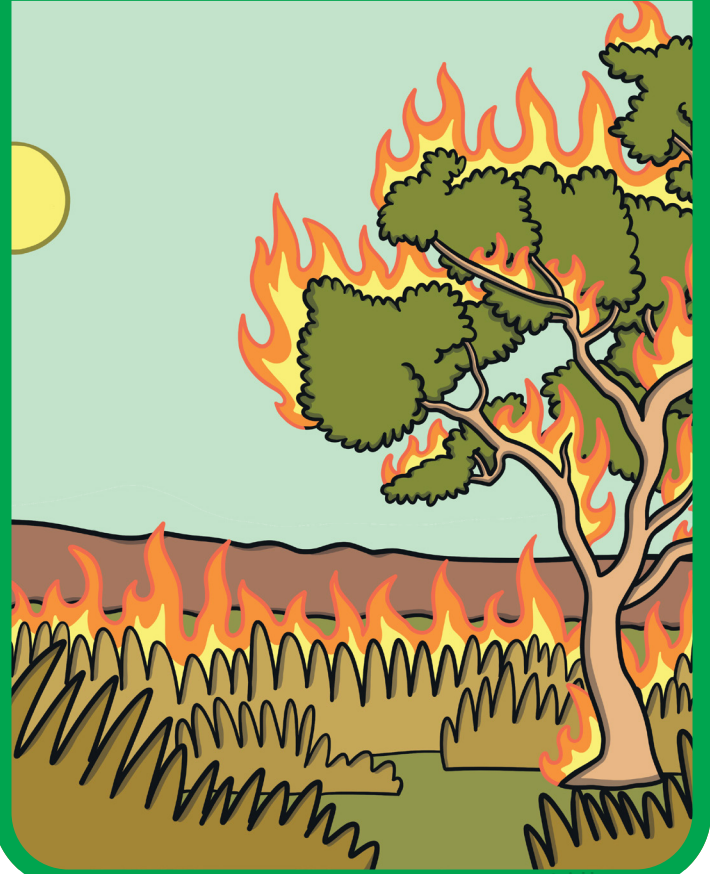


twinkl.com

Is this an emergency?



Is this an emergency?



Which emergency service should be called?



Ambulance



# Police Car



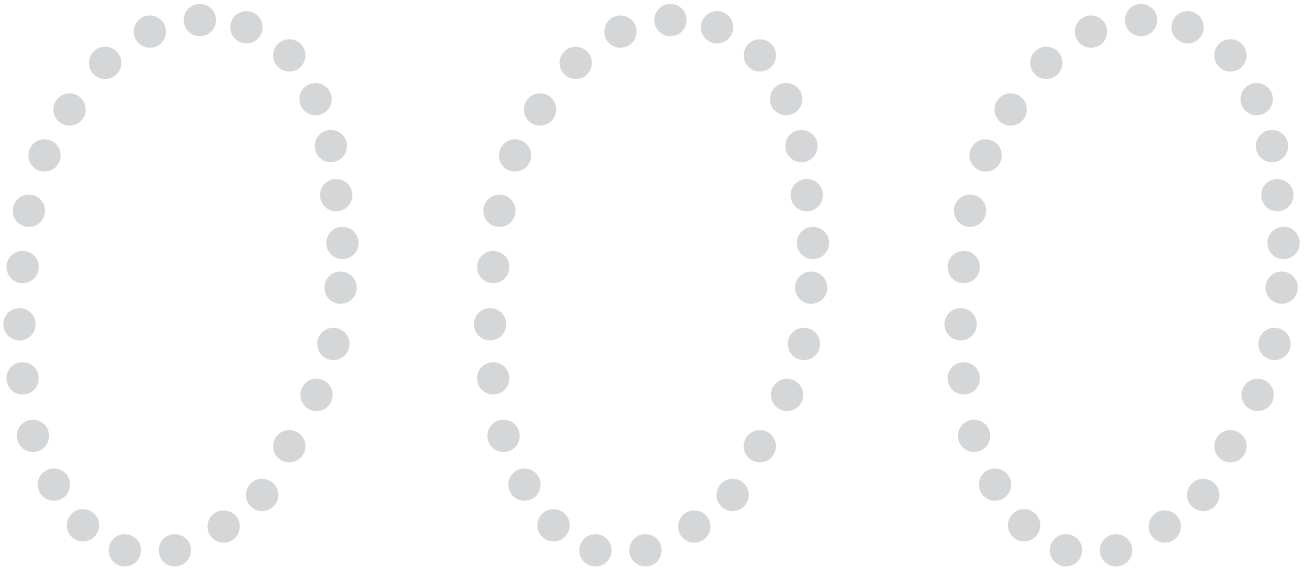
twinkl.com

# Fire Truck



twinkl.com

# In an Emergency, We Call



000

000

000

000

000

000

000

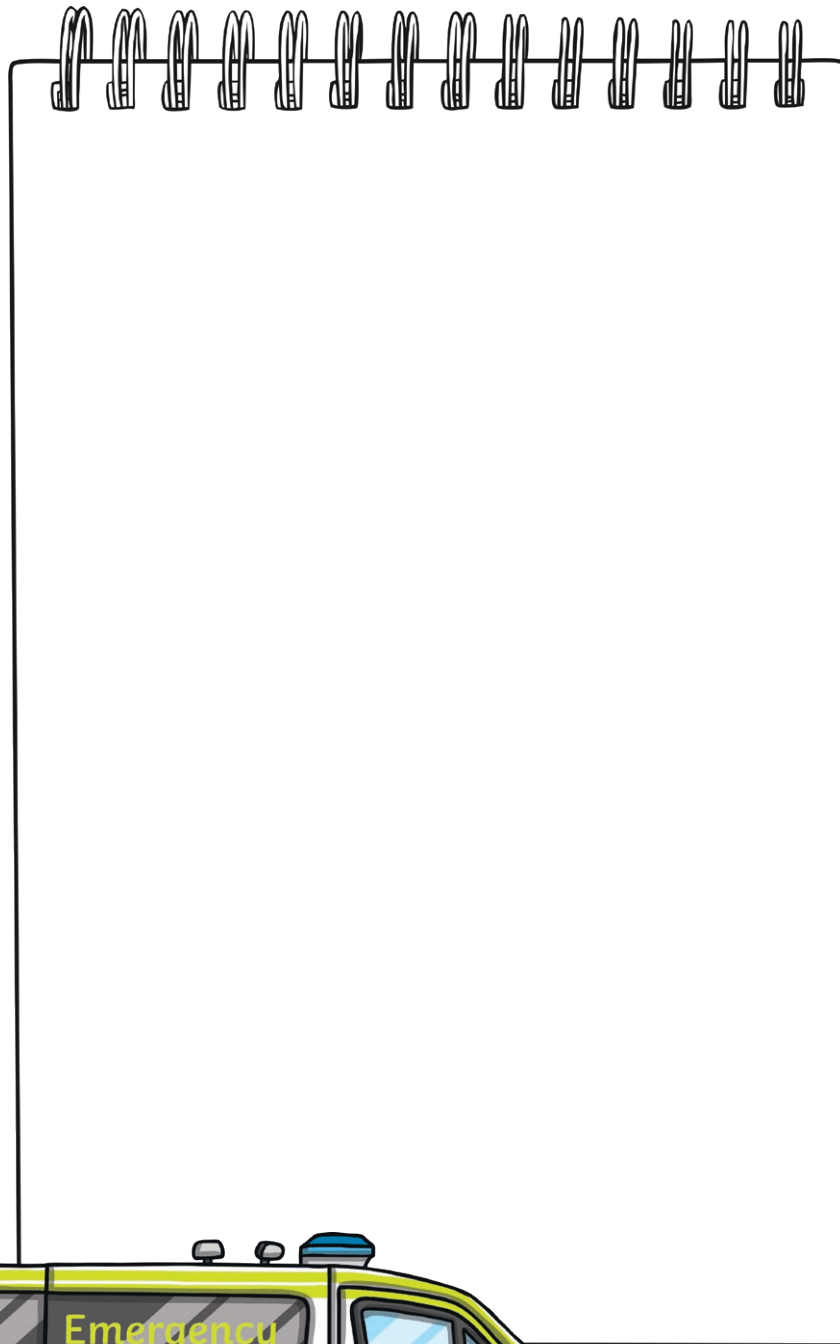
000





# In an Emergency, We Call

Write the phone number for the emergency services on the notepad below.



# In an Emergency, We Call

Circle the correct number to call in an emergency.

888	666	777	222
333	222	999	444
000	555	888	919
999	444	777	000
777	555	111	898
666	444	999	000



# In an Emergency, We Call

Colour the number below.

